

pc/MRP NEWS

pc/MRP RELEASES 9.70 VERSION

Mar 15 2025

e-mail address: sales@pcmrp.com

Internet: www.pcmrp.com

pc/MRP for Windows - Version 9.70

Modules Tools Optional Configur

New Tree View BOM Option

(Edit) BOM: 000000011 (REAR WHEEL AXLE ASSY)

Part Number (Description)	Top Level Assembly	PN #
000000003 REAR AXLE	REAR WHEEL AXLE ASSY	000000011
000000010 WHEEL ASSY	Parent Assembly	000000010
000000001 BEARING, 3	WHEEL ASSY	
000000002 SPOKE		
000000013 LABOR INSH		
000000014 LABOR OUT		
000000017 BEARING 2,		
000000018 Brake Asser		
000000001 BEARING		
000000019 Break Pa		

Item # BOM Qty Alternate Part #s

Type

Effective Date Start // End //

Average Cost Unit 1.000000 Extended 40.000000

Reference Designators

Buttons: Add Item, Delete Item, Create New Part, OK, Cancel

Nodes Record: 4/10 Exclusive NUM

New Tree View BOM Editing Option

With pc/MRP Versions 9.61 and higher contain the option to edit BOMs with a new Tree View Option. The Tree View Option allows you to view the whole BOM when entering or editing a BOM. Users can choose to enter and edit BOMs with the new Tree View Option or pc/MRP's original BOM Editor.

Ordering Information for Update

Companies who are currently on a support contract can update for **FREE**. Those not on a support contract can update to version 9.70 for \$1,295.00. This includes 1 year of technical support (6-hour cap). Companies whose support contract has been expired for more than 1 year will be charged an additional \$250.00 for each year skipped up to a maximum of \$1,995.00 for a new support contract.

To order the update call Software Arts 408-226-7321.

New – Stockroom Process Creation Field

The Field allows users to know what type of stockroom transaction created the stockroom record. pc/MRP Version 9.62A or higher

New – ECN can be set to exclude displaying obsolete effected BOMs.

With version 9.70, you can set pc/MRP's ECN Module to not display effected BOMs that have been marked as Obsolete as these BOMs may not need to be modified. Pc/MRP version 9.62 F or higher.

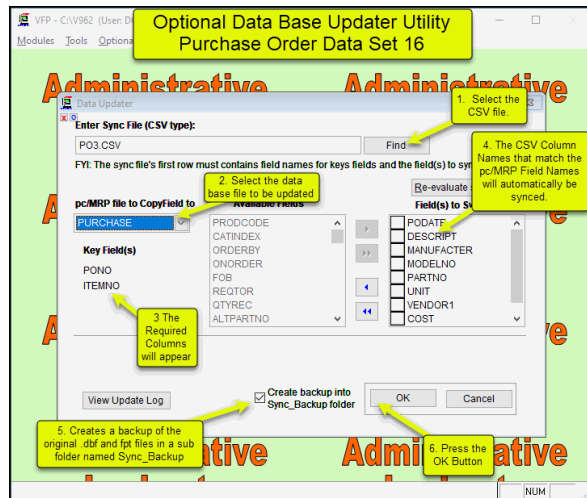
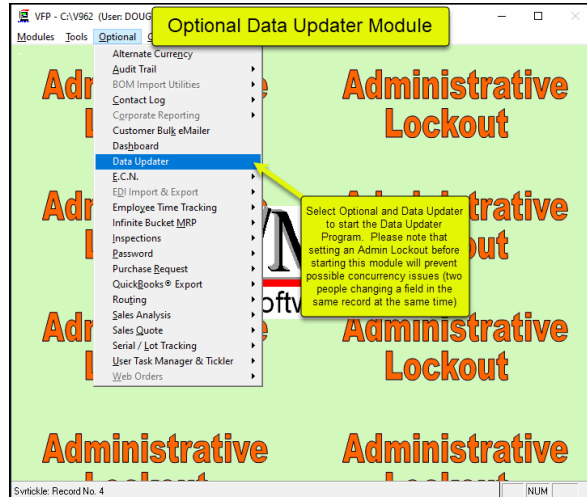
New – Automatically email Invoices, Purchase and Sales Orders to multiple people

All email fields increased to 90 characters allowing invoices, purchase orders, etc. to be emailed to multiple people. Mouse over email fields will display all email addresses. pc/MRP Version 9.62A or higher.

New – All Edit Queries can now use an ~ as an AND Clause

All Edit Queries can now use an ~ as an AND Clause. Select Exclusive if both words and required. Select Inclusive if either word is required. pc/MRP Version 9.62G or higher.

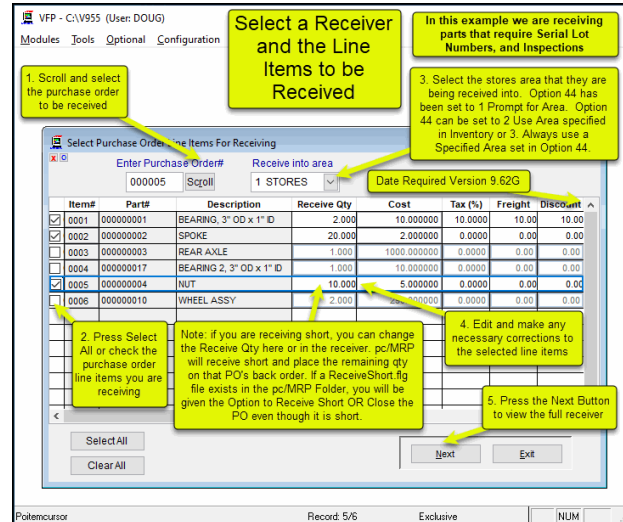
New – Optional Data Updater Module Allows Multiple Fields to be updated from a CSV File. (\$650.00) Requires Optional Audit Trail Module.



Backup Checkbox Option
 Imports up to 250 fields/Columns per CSV File
 Automatically Syncs CSV Columns with Fields
 Creates an Audit Trail Entry for every change
 Replaces double quotes with single quotes
 Creates an error log and will not import that data
 Invalid date fields
 Characters exceed the length of the field

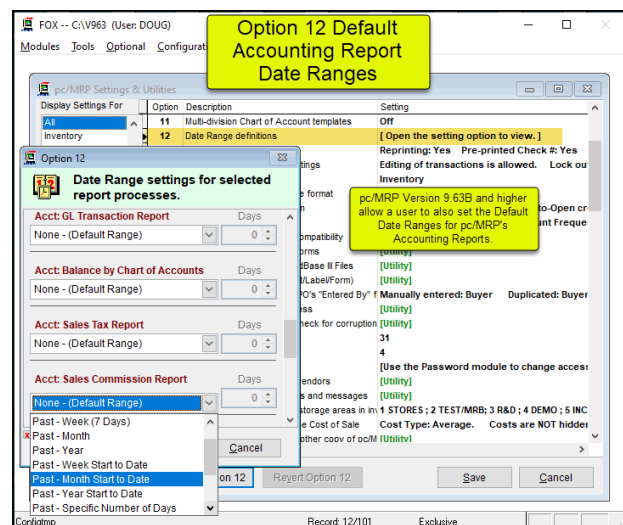
Link to the setup slide show (Slides 1-12)
<https://pcmrp.com/mrp101/dataupdateroverview.htm>

New – Date Required added to the Receiver's Purchase Order Grid and Receiver's Edit/Scroll Lookup Window



pc/MRP Versions 9.62G and higher Include the Purchase Order Date Required column on both the Receiver's Purchase Order Grid and the Receiver's Edit/Scroll Lookup Window.

New – Users can now set the Default Date Range for pc/MRP Accounting Reports with Configuration, Settings and Utilities, Option 12.



New – Barcoded Physical Inventory Count Sheets – Requires Optional pc/MRP Barcode Module

Automatically Call, Message, Email and or Skype Contacts and Vendors from within pc/MRP

Click on the Contacts Tab

Unlimited Notes per Contact. Will display View Contact Notes in bold if there are notes.

Unlimited contact methods per contact.

Unlimited contacts per address.

Must have the word skype in Method and contact's Skype Address in Value to Call by pressing the Skype Button. (Anywhere in the world)

Must have the word email in Method and contact's email Address in Value to email by pressing the email Button

Must have the word phone in Method and contact's phone number in Value to Call or Message by pressing the Phone Button. See slide 6

If strange contacts appear, an older address ID was deleted. A new address contains the same address ID. To remove these legacy contacts, Mark them for deletion, Set an Admin Lockout, Select Modules, Address Book and Remove Marked Records. Version 9.5SP sorts Contacts by First Name - Last Name instead of by Title - First Name - Last Name

New – Cycle Count - Count Sheets Requires Optional pc/MRP Barcode Module

Full Cycle Count Custom Bar Coded Form pc/MRP Version 9.62M or Higher

If you have pc/MRP version 9.62 or Higher AND you have pc/MRP Optional Bar Code Module, check the Barcoded Form Checkbox to print out a barcoded cycle count sheets

Operation Standard Forms Custom 9.50-Higher Bar Coded 9.62M-Higher
 Full Cycl CycleCnt CustCycle CycleCntBC
 Diff Cycl CycleDiffCnt CustCycleDiff CycleCntBCDiff
 Physical BlinkInv cBlinkInv

Physical Inventory Step 3 Generate Bar Coded Count Sheets Version 9.62M and Higher

Bar Coded Part Number. 31 Characters Max

Additional Blank Columns include Recount Initials and Weight Count

Part Description 90 Characters Max

Operation Standard Forms Custom 9.50-Higher Bar Coded 9.62M-Higher
 Full Cycl CycleCnt CustCycle CycleCntBC
 Diff Cycl CycleDiffCnt CustCycleDiff CycleCntBCDiff
 Physical BlinkInv cBlinkInv

Full Cycle Count Custom Bar Coded Form pc/MRP Version 9.50 or Higher

The count sheet will be in order by part number. If your parts are stored in part number order you can enter the qty's sequentially

Primary Locations will be displayed in this column

Pencil in your counts into these columns

DATE: 04/24/2024 01:31:20 PM

PART NUMBER	CLASS DESCRIPTION	LOCATION
PLP-CSM3-6-SW-PW		
PLP-CSM4-6-SW-PW		
PLP-CTAM110C2	A Mount, Anchor	
PLP-CTAM110C2-A	A Mount, Anchor	
PLP-D4DS-KI (2)	A	
PLP-D4NS-1DF	A Safety-door Switch	
PLP-EDS-315	A Switch, Network, DIN, 24V, 16P	
PLP-FAZ-D10_2-RT	A	
PLP-FAZ-D20/1-RT		
PLP-G7SA-2A2B-DC24V		

Additional Enhancements

- 9.61A**
Added Key1, Key2, Key3 Fields to Audit Trail to record Document and Item Numbers
- 9.61B**
Closed permission holes involving Inventory access in several Modules
- Improved the PayLink process's ability to handle foreign languages.
- 9.61C**
Improved the PayLink process's ability to handle foreign languages
- Changed the TAB order for the PO Popup message button on the PO screen
- Added the ON DEMAND, MRP AVAILABLE qty fields to the Inventory scroll window
- 9.61D**
Added improved reliability by adding a delay when packing and reindexing tables
- 9.62B**
Added ability to attach an external process prior to Sales Order part lookup Modules
- 9.62C**
Routing record will no longer be open if the Sales/work order is complete
- 9.62D**
PO Data can now be included on a custom Check Availability Report

pc/MRP's Optional QuickBooks Interface Module \$650.00

pc/MRP's QuickBooks Interface module exports all open invoice and receivers to QuickBooks. It posts the initial AP and AR entries into QuickBooks and eliminates double entry for those companies using QuickBooks as their accounting module.

QuickBooks Export Overview

pc/MRP's QuickBooks Interface Module allows companies to implement a major MRP System and continue to use QuickBooks for accounting. No more double entry of data invoices, receivers, vendors, parts, etc. Manage large indented Bills of Materials (up to 100 levels deep) Infinite Bucket MRP provides automatic scheduling of factory floor. Stockroom Module can issue Parts to Mfg and Receive back Assys Hundreds of users can enter, edit, display, print data simultaneously Optional Routing Module will track sales/work orders through mfg The Optional Serial Lot Number Module will track serial numbers Supports ISO 9000 Reporting, Digital Images, RoHS, Where Used

- Export all open Invoices, related customers, and parts to QuickBooks
- Export all open Receivers, related vendors, and parts to QuickBooks
- Print/Display Next and Prior Export Reports
- Export Invoice records
- Export Receiver records (Bills)
- Reports
- Update the cached QB data files
 - Update the Accounts List
 - Update the Part Item List
- Set Exporter Default Settings

Set up the initial interface between pc/MRP and QuickBooks.

Stores the all of the QuickBooks Chart of Account and Part Number Names in QbAccountsDbf.DBF and QbPartsDbf.DBF so that pc/MRP will not have to query QuickBooks when click on a part number's QuickBooks Tab. This list is also updated when ever you select Set Exporter Default Settings. QbAccounts.mem stores pc/MRP's Default QB Accounts

Note: pc/MRP integrates with the Desktop version of QuickBooks, and not with the Online version. US version only.

pc/MRP can be integrated with any desktop version of QB (pro, Enterprise, etc) 2007 and Higher
pc/MRP 8.82G and higher is compatible with QuickBooks 2007 and higher SDK 13.0
pc/MRP 8.95L and higher added additional invalid character checking code
pc/MRP 9.12D added the option to use the export date (ReceiverExportDate.fig)

pc/MRP's Optional Advanced Password Module \$650.00

pc/MRP's Advanced Password Module allows an unlimited number of user name and password combinations to control access rights to each pc/MRP Module.

pc/MRP's Optional Advanced Password Module:
 Allows an infinite number of user name and password combinations.
 Assign each user rights (None, View, Create, Edit, Delete) to each module.
 Assign which users can approve POs, PO Requests, Sales Orders, Sales Quotes, ECNs.
 Assign which users can see what inventory areas. Use specific Stockroom functions.
 Can be set to use Simple or Sarbanes-Oxley Compliant Password Rules.
 Names, Passwords, and Settings are protected by 128 bit encryption.
 Set each user's preferred language (9.14 and higher).

User Name	Password	Shipment	EDI	Dashboard	InvAreas	StkActions	PO Approval
DAVID	*****	D	D	V	Edit	Actions...	No Approval Rights
DOUG	****	N	N	N	Edit	Actions...	Level 3 Approval Rigi
DOUG2	*****	N	N	N	Edit	Actions...	Level 2 Approval Rigi
JOE	***	E	N	N	Edit	Actions...	No Approval Rights
KIM	***	N	N	N	Edit	Actions...	Level 3 Approval Rigi
RON	***	N	N	N	Edit	Actions...	Level 4 Approval Rigi
SHAHINA	*****	D	D	N	Edit	Actions...	Level 2 Approval Rigi
SOO	***	E	N	N	ns...	ns...	Level 1 Approval Rigi

pc/MRP's Optional Routing Module \$650.00

pc/MRP's Routing Module allows users to track the location of sales/work orders on the manufacturing floor.

Routing Module Overview

Up to 50 user definable work areas. (Versions 9.21B and higher)
Each BOM can have its own routing template.
Issuing a sales/work order to mfg auto creates a routing record.
Move partial of full quantities.
Moving product to finished goods can incr Finished Goods Qty and dec WIP Qty.
User can enter upto 256 chars of comments per workstation per sales/work order

Move a sales or work order from station to station

View where a sales or work order is on the floor

Set the value based on work station

Print/Display Routing Reports

Remove all routings marked for deletion

Set Router Settings

Re-index the Routing Record

Remove all routings over X years old

Optional Module - Routing

NUM

The screenshot shows a software window titled 'VFP - C:\V955 (User: DOUG)'. The 'Optional' menu is open, showing a list of modules. The 'Routing' option is highlighted. A large yellow box at the top center contains the title 'Routing Module Overview' and a list of features. Several yellow callout boxes with arrows point to specific menu items: 'Enter Movement' (Move a sales or work order from station to station), 'View Movement' (View where a sales or work order is on the floor), 'WS Value Percentages' (Set the value based on work station), 'Reports' (Print/Display Routing Reports), 'Index' (Re-index the Routing Record), 'Remove Marked Records' (Remove all routings marked for deletion), 'Remove over X Years' (Remove all routings over X years old), and 'Settings' (Set Router Settings). The bottom status bar shows 'Optional Module - Routing' and a 'NUM' button.

pc/MRP's Optional Employee/Time Sheet Module \$650.00

pc/MRP's Employee/Time Sheet Module allows companies to track the actual labor cost of sales and work orders:

The screenshot displays the 'Optional' configuration menu in the pc/MRP software. The 'Employee Time Tracking' option is highlighted, with a yellow arrow pointing to it. A yellow box titled 'Employee Time Sheet Overview' is positioned above the menu. To the right, another yellow box provides configuration instructions for the Accounting Cost of Sales Report. Below the menu, a third yellow box explains the two modules of the Employee/Time Sheet system. At the bottom, a larger yellow box lists key accounting capabilities. The window title bar reads 'VFP - C:\V955 (User: DOUG)' and the status bar shows 'Optional Module - Employee Time Tracking' and a 'NUM' button.

Employee Time Sheet Overview

To allow the Accounting Cost of Sales Report to use actual employee times and compare them against theoretical labor times (Manufacturing Variance Report), set Configuration, Settings and Utilities Option 79 to "Get Labor Hours From Employee Time Sheet" and "Derived from Employee Pay Rates". All employee times that worked on that sales or work order must be entered prior to the Stockroom Module Receiving back the sales or work order from manufacturing.

The Employee/Time Sheet Module actually consists of two modules. The first module, Employee Info, is used by accounting to create and manage employee records. The second module, Time Sheet, is used by individuals and/or accounting to create and manage employee time sheets.

Accounting can manage employee records for pay rates, date hired, vacation hrs, state & federal withholding
Accounting and or individual employees can create and manage employee time sheets.
Accounting can print out actual labor hours and costs for a sales & work order from the time sheet report module.
Accounting can compare actual vs theoretical costs for sales/work order with the Manufacturing Variance Report.
Accounting can print reports of employee's data to enter into a payroll system.

Optional Module - Employee Time Tracking

NUM

pc/MRP's Optional Infinite Bucket MRP Module \$650.00

pc/MRP's Infinite Bucket MRP Module allows users to generate MRP Action Items (PO, Buy, Issue, Make, Sale) and generate MRP Reports. Advanced features include:

pc/MRP's Infinite Bucket Overview

- Generate Action items: Generate Action Items, this option creates an Action Database File that is designed to schedule the company's manufacturing operations.
- Display Generation Errors: Display/Print any errors found in the last generation, such as POs without due dates, etc.
- Print Action item reports: Print action item reports (buy, make, issue, pushpull, etc.).
- MRP Timeline: Print/Display a graphical time line of action items for a sales/work order.
- Item Graph: Prints/Display a graphical representation of all action items required for a specified part number.
- Automatically create Work Orders: Automatically create work orders.
- Automatically create Purchase Orders: Automatically create POs.
- Update the Req Ship Date on Dedicated Work Orders: Update the work order dates if the driving sales order dates have changed.
- Index the Action item database: Index the Action Database.
- MRP Calendar: Schedule Weekends and Holidays.

Factors In:
 Onhand Qtys
 Min Qtys
 Std Order Qtys
 Order Multiples
 Set-up Qtys
 Attrition %
 Open POs
 Open Sales Orders
 Open Sales Quotes
 WIP Shortages
 Part Lead Times
 Assy Lead Times
 Weekends
 Holidays

Automatically creates manufacturing schedules (Buy, Issue Make)
 Automatically creates work orders
 Automatically creates purchase orders
 Print/Display Standard and Graphical Reports.
 Option to Include Sales Quotes with probability %
 Option to schedule Weekends and Holidays (Weekends default to off) 9.13
 Source Column for Issue and Sale Action Items (Source=Onhand,PO#,WO#,Buy,Make) 9.36

pc/MRP's Optional Inspection Module \$650.00

pc/MRP's Inspection Module allows users to create global inspection requirements and records:

Inspection Data Entry Screen

1. View the Inspection Criteria for this part or assy

Create / View Links to files, folders and WebSites

Inspected from Document

2. Insert Date (DateInsp)

3. Insert your name or initials

4. Select Status

5. Check if applicable

6. Enter Qty's

Note: If items are rejected, use the Stockroom to move the items to a scrap area and they should be sent back to the vendor with a Debit Memo.

7. Enter Discrepancies (maltext M)

8. Enter Corrective Action (correction M)

9. Print Inspection Record

10. Press the OK Button

Inspect.dbf (MalCode C5) is not used by pc/MRP.

87/88 Record Unlocked

Inspection Form - (Edit Mode)

Inspect #	0000000087	Part Number	000000002	Inspection Criteria...	Rev
Record Type	Receiver	Description	SPOKE		
Document #	000001 0002	Vendor Id/Name	ABC001 ABC MANUFACTURING COMPA	Date Insp Record Created (DateReq)	

Complete the inspection record the discrepancy/reason for rejected material on applicable.

Date Created: 08/31/2023
Inspect Date: 08/31/2023 < Today
Inspector: Doug
Status: Accepted
 Certificates Received

Inspect Qty	20.000
Accept Qty	20.000
Rejected Qty	0.000
Auxiliary	

Discrepancies: None

Corrective Actions

Delete Ok Cancel

pc/MRP's Optional Ticker / Task Manager Module \$650.00

pc/MRP's Task Manager Module allows users to enter pop up tickler messages and manage tasks to their completion

Task Manager and Tickler
Creating a new Reminder (Tickler)

1. From the Address, click on the Ticker Button. You can also go to Optional, User Task Manager and Ticker and select New Task

2. Set the Date and Time the msg is to pop up

3. Select the Priority, Category and Status (Working)

4. Enter the purpose of the task

5. Press OK

Task Properties

Task: Contact BBC MANUFACTURING COMPANY (BBC001)

Reminder

11/03/2023 05:20:59 PM

Priority: Normal

Category: Sales Follow-up

Status: Working

Task Description: Call Jim and see if they received quote

Calendar: November 2023

Today: 11/3/2023

Buttons: Ok, Cancel

Bottom Bar: Contact Log, Logbook, Link, Tasks, Messages, Labels, Delete, Ok, Cancel

pc/MRP's Optional ECN Module \$650.00

pc/MRP's ECN Module allows users to record all revision changes to parts and assemblies.

**ECN Module Overview
Version 9.32 and Higher**

Callouts and menu items:

- Create a New ECN Record (points to New)
- Edit an ECN Record (points to Edit / View)
- Print/Display ECN Record (points to Print)
- Print/Display ECN Reports (points to Reports)
- Print/Display all open purchase orders affected by ECNs issued in the last 30 days. (points to POs effected by ECNs)
- Remove all ECN records marked for deletion. (points to Remove Marked Records)
- Remove all ECN records over X years old. (available 8.71B and above) (points to Remove over X Years)
- Use Alpha or Numeric Characters for Revision (points to ECN Settings)

Menu items visible:

- Alternate Currency
- Audit Trail
- Contact Log
- Corporate Reporting
- Customer Bulk eMailer
- Dashboard
- E.C.N.**
- EDI Import & Export
- Employee Time Tracking
- Infinite Bucket MRP
- Inspections
- Password
- Purchase Request
- QuickBooks® Export
- QuickBooks Online® Export
- Routing
- Sales Analysis
- Sales Quote
- Serial / Lot Tracking
- User Task Manager & Tickler
- Web Orders

Additional menu items in the ECN submenu:

- New
- Edit / View
- Print
- Reports
- POs effected by ECNs
- Index
- Remove Marked Records
- Remove over X Years
- ECN Settings

Where Used info auto inserted into ECN.
Affected Open Sales and Work Order auto inserted into ECN.
Automatically rolls the part's/Assemblies Revision Level.
User can send Email to other users requesting their approval.
Qualified users can insert their digital approval signatures.
Unlimited Description, Reason, History, Where Used, and Documents Fields
Store unlimited links to related documents for each ECN.
Option to create a part on the fly.
Effectivity Date (Reference Only).

NUM

pc/MRP's Optional QuickBooks Export Module \$650.00

pc/MRP's Optional QuickBooks Export Module allows users to export Invoices and Receivers to Pro, Premier, Enterprise versions of QuickBooks. It also automatically posts all receivers and invoices. It adds vendors, customers, part numbers, terms, etc. if they do not exist in QuickBooks.

QuickBooks Export Overview

pc/MRP's QuickBooks Interface Module allows companies to implement a major MRP System and continue to use QuickBooks for accounting. No more double entry of data invoices, receivers, vendors, parts, etc. Manage large indented Bills of Materials (up to 100 levels deep) Infinite Bucket MRP provides automatic scheduling of factory floor. Stockroom Module can issue Parts to Mfg and Receive back Assys Hundreds of users can enter, edit, display, print data simultaneously Optional Routing Module will track sales/work orders through mfg The Optional Serial Lot Number Module will track serial numbers Supports ISO 9000 Reporting, Digital Images, RoHS, Where Used

- Export all open Invoices, related customers, and parts to QuickBooks
- Export all open Receivers, related vendors, and parts to QuickBooks
- Print/Display Next and Prior Export Reports
- Export Invoice records
- Export Receiver records (Bills)
- Reports
- Update the cached QB data files
- Update the Accounts List
- Update the Part Item List
- Set up the initial interface between pc/MRP and QuickBooks.
- Set Exporter Default Settings

Stores the all of the QuickBooks Chart of Account and Part Number Names in QbAccountsDbf.DBF and QbPartsDbf.DBF so that pc/MRP will not have to query QuickBooks when click on a part number's QuickBooks Tab. This list is also updated when ever you select Set Exporter Default Settings. QbAccounts.mem stores pc/MRP's Default QB Accounts

Note: pc/MRP integrates with the Desktop version of QuickBooks, and not with the Online version. US version only.

pc/MRP can be integrated with any desktop version of QB (pro, Enterprise, etc) 2007 and Higher
 pc/MRP 8.82G and higher is compatible with QuickBooks 2007 and higher SDK 13.0
 pc/MRP 8.95L and higher added additional invalid character checking code
 pc/MRP 9.12D added the option to use the export date (ReceiverExportDate.flg)

pc/MRP's Optional BOM Import/Synchronizer Module

\$3,995.00 + Customization if necessary

pc/MRP's Optional BOM Module allows users to import and sync Multi-level BOMs from Agile, Arena, and Autodesk Solid Works into pc/MRP.

Optional Agile Import / Sync Module

Click on Modules, BOMs, and BOM Import Utility (Agile) to import an XLS, XLSX or CSV multilevel Agile BOM file.

1. Click on Configuration, User Connectivity and Admin Lockout, Set the Lockout, and wait for everybody to get out except yourself.

Please Note: User must have BOM Delete Rights and Partmast Edit Rights to run this option.

Note: Make sure the size of the Part Numbers in the import file is \leq the size of your part number setting in Configuration, Settings and Utilities, Option 28.

pc/MRP Version 9.52F added AltParts1-6, MFGs1-9, ModelNos 1-9 and Orcad Fields

pc/MRP's Optional Agile BOM Import Utility will automatically:
 Work with Agile XLS, XLSX, and CSV BOM files:
 Check that an Admin Lockout has been set.
 Scan to make sure no new part number exceeds part number size set in Option 28
 Back up pc/MRP's Partmast and BOM database files.
 Add part numbers that do not exist in pc/MRP.
 (Part No, Description, Part_Assy, Unit, Rev, Status, PartType, AltParts1-6, MFGs1-9, ModelNos 1-9)
 If Checked,
 Update Description, Rev, Unit, Status, PartType, AltParts1-6, MFGs1-9, ModelNos 1-9 of existing part numbers.
 Delete the current BOM(s) in pc/MRP listed in the import file.
 Import the BOMs listed in the import file into pc/MRP.

pc/MRP Sales
Software Arts, Inc.
6830 Via Del Oro, Suite 109
San Jose CA 95119-1353
Phone: 408-226-7321
Fax: 408-226-8435
Website: www.pcmrp.com
e-mail: sales@pcmrp.com